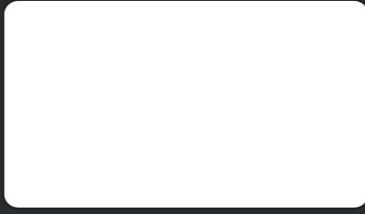


Specification		S400			
		CO <sub>2</sub>	Fiber	Dual	
<b>Work Area</b>		916 x 610 mm (36 x 24 in.) Extendable to 1016 x 610 mm (40 x 24 in.)			
<b>Max. Part Size (L x W x H)</b>	All doors closed	1053 x 647 x 280 mm (41.4 x 25.4 x 11 in.)			
	All door open	1053 x ∞ x 280 mm (41.4 x ∞ x 11 in.)			
<b>Dimensions (W x D x H)</b>		1440 x 900 x 1048 mm (56.7 x 35.5 x 41.3 in.)			
<b>Weight</b>	CO <sub>2</sub> 60~100W	270 kg / 595 lb			
	Fiber 20W~60W	260 kg / 573 lb			
<b>Laser Source</b>	10.6-μm CO <sub>2</sub> laser	9.3-μm CO <sub>2</sub> laser	Fiber laser	10.6-μm CO <sub>2</sub> laser: 40 to 120W 9.3-μm CO <sub>2</sub> laser: 60W	
	60~120W	60W	20 / 30 / 60W	Fiber laser: 20 / 30 / 60W	
<b>Cooling</b>		Air-cooled, Operating environment temperature 15°- 30°C (59°- 86°F)			
<b>Drive</b>		Closed-loop DC servo control			
<b>Maximum Motor Speed</b>		140 IPS			
<b>Speed Control</b>		Adjustable from 0.1~100% (Up to 16 color-linked speed settings per job)			
<b>Power Control</b>		Adjustable from 0~100% (Up to 16 color-linked power settings per job)			
<b>Engraving Capability</b>		256-level gray scale image processing capability			
<b>Distance Accuracy</b>		0.254 mm or 0.1% of move, whichever is greater			
<b>Z-Axis Movement</b>		Automatic			
<b>Focus Lens</b>		CO <sub>2</sub> : Standard 2.0" (Optional 1.5", 2.5" & 4.0") Fiber: Standard 2.0" (Optional 4.0") Dual (CO <sub>2</sub> +Fiber): Standard 2.0" (Optional 3.0" & 4.0")			
<b>Resolution (DPI)</b>		Available 125, 250, 300, 380, 500, 600, 760, 1000, 1500			
<b>Interface</b>		10 Base-T Ethernet USB Type-A 2.0  – For USB storage (Max. 32GB capacity, FAT file system) USB Type-B 2.0  – For connecting with the computer			
<b>Compatible Operating System</b>		MS Windows 64 Bit			
<b>Control Panel</b>		Touch Screen			
<b>Safety</b>		Class I Laser Product Complies with EN60825-1:2014, EN ISO 13849-1:2015 Class II Laser Product Complies with CDRH for CO <sub>2</sub> Laser Class 3R Laser Product Compliant with CDRH for Fiber & Dual Laser sources 2006/42/EC Machinery Directive Compliance Class 4 Laser Product Compliant with CDRH with the optional pass-through door module			
<b>Operating Voltage</b>		Below 80Watt, 100-240VAC, 50/60HZ Auto Switching, max. 15A 80Watt and above, 200-240VAC, 50/60HZ Auto Switching, max. 15A			
<b>Fume Extraction System</b>		External exhaust system with minimum flow rate 800m <sup>3</sup> /h (CFM 471 ft <sup>3</sup> /min) is required, 2.3kPA negative pressure (Pure-Air PA-1500FS @ 4" exhaust port)			

\*\* Speed is not equal to throughput. See dealer or visit [www.gccworld.com](http://www.gccworld.com) for more detail.  
 ▲ Specifications are subject to change without prior notice.  
 \*\*\* Please use certified brands by GCC for LaserPro USB storage, kindly refer to GCC User Manuals for more details.

Authorized Dealer



[www.GCCworld.com](http://www.GCCworld.com)

# The Flagship Model of The Laser Engraver

Your Best Ever, Beyond Expectation, Unlimited Laser Machine.



## Laser Engraver S400

- 1016 x 610 x 30 mm (40 x 24 x 11 in.) extra large working area
- 140ips high speed with DC servo motor for precise and rapid movement of the laser carriage
- GCC SmartFLOW™ technology provides outstanding dust protection
- GCC SmartLID™ invention makes maintenance a lot easier
- QSM (Quality Speed Mode) maintains 100% engraving quality while operating at maximum speed
- Patented SmartACT™ motion control technology increases your productivity by reducing ramping process and job running time
- Drag and engrave feature assures remarkably easy and fast set-ups
- Pass-through front and rear doors to accommodate long working pieces (optional)
- CO<sub>2</sub> and Fiber laser option in one laser machine



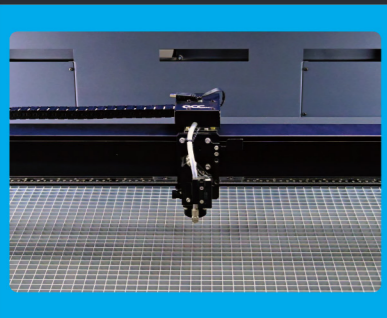
# GCC LaserPro S400



## Laser Engraver GCC LaserPro S400

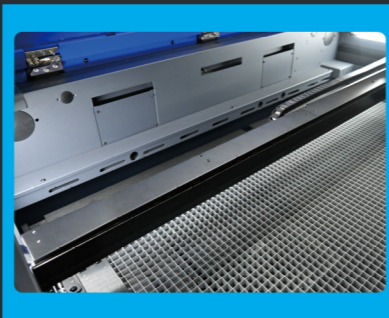
Inherit all the advantages from Spirit Hybrid, a brand new machine – S400 features 140ips processing speed by DC servo motor, innovative touch panel, user friendly interface and a modern good looking design. Together with SmartFLOW™ dust prevention technology and SmartLID™ easy access invention, S400 presents you the highest throughput and precise laser quality. GCC S400 makes all your imaginations to life at the speed of light.

## Features



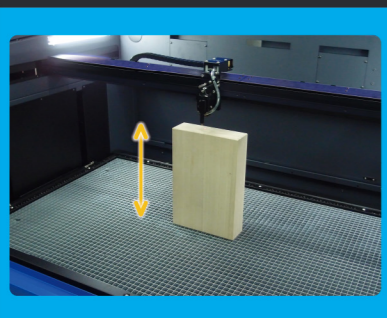
### Perfect Cutting and Engraving Throughput

Maximum 140ips processing speed with powerful DC servo motor to boost productivity while maintaining precision.



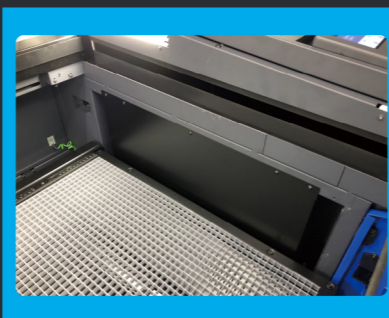
### SmartSEAL™ Technology

New gantry design to prevent dust, the easy take-off cover also makes the maintenance a lot easier.



### Higher Working Depth

Depth of Z-axis up to 11" (280 mm) thick.



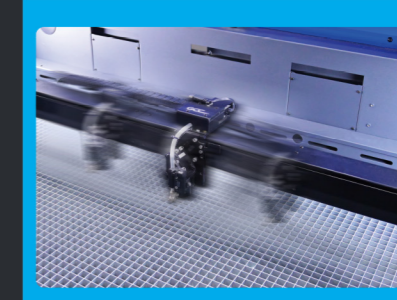
### Dust Prevention

Incorporating metal panels to protect key components, but not seal entirely to case any difficulty of maintenance.



### SmartFLOW™ Technology

SmartFLOW™ invention creates a perfect Air Flow to enhance the vacuum effect and bring out the dust completely while working.



### SmartACT™ (Patented)

Ground-breaking technology that reduces the ramping process and the job running time, which translates into higher productivity.



### SmartLID™ Easy Access

Easy access design simplifies maintenance.



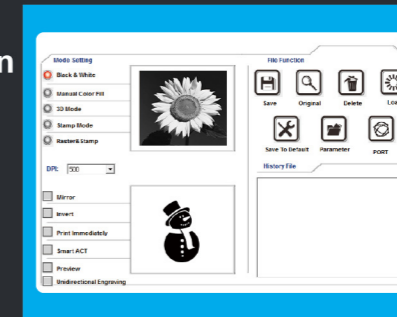
### Pass-through Front & Rear Doors (Optional)

Convenient front and rear door open design enables loading of extremely long working pieces with ease and extends business flexibility.



### Intuitive Touch Screen

Operation is easy and intuitive with the 4" touchscreen.



### User Friendly Driver Interface

Starting from end users' view, GCC driver evolves into a brand new design with the intuitive interface to favor each user.

## GCC LaserPro S400 Application

