

## StellarMark 3DS Specifications

		3DS Series		
Model No.		3DS-20JFL	3DS-30JFL	3DS-50JFL
Laser Type	Wavelength	1064 nm		
	Type	Fiber Laser		
	Output Power	20W	30W	50W
	Cooling	Air-cooled, no water chiller required		
Working Area		300 x 300 mm		
Spot Size		0.067 mm		
Max. Linear Marking Speed		6,000 mm/s		
Max. Marking Speed		12,000 mm/s		
Focal Distance		285 mm		
Focus Range in the Z-direction		100 mm		
Electrical Requirements	Power Supply	AC Auto-Switching 115V / 230V, 50-60 Hz/ single phase		
	Power Consumption	740W		
Dimensions (L x W x H)	Laser Marker	760 x 210 x 220 mm		760 x 210 x 220 mm
	Laser Housing Unit	N/A		383 x 318 x 120 mm
Laser Marker Weight		20 Kg		16.0 Kg
Laser Housing Unit Weight		All in one designed	All in one designed	12.7 Kg
Operating System		Microsoft Windows 7(32/64 Bit) / 8(32/64 Bit) / 10(32/64 Bit) (Desktop or Laptop PCs)		
Environment	Temperature	15°C ~ 35°C		
	Humidity	10 ~ 80% Non condensing		
Safety	Class 4 (EN60825-1 Class 1 available with safety shield and LFCII and LFC D) 2006/42/EC Machinery Directive 2014/35/EU Low Voltage Directive 2014/30/EU Electromagnetic Compatibility Directive			



## Scan Lens Specifications

Specifications	StellarMark 3DS
Model No.	300
Working Area	300 x 300 mm
Spot Size*	0.067 mm
Working Distance	285 ± 2 mm
Repeatability**	0.04 mm



Above specifications are subject to change without further notices. See dealer or visit <http://www.GCCworld.com> for more details.

All above spot size will be material dependent.

\*According to theoretical calculation

\*\*The test is 8-hour continuous firing with power level at 30% using a 60JFL

△ Specifications are subject to change without prior notice



- ▶ 3D scan head which can support curve/cylinder objects marking.
- ▶ Fiber laser available in 20W / 30W / 50W configurations.
- ▶ Easy integrate with the product line thanks to the all-in-one design (only 20/30W).
- ▶ 300x300 mm working area to meet your application needs.
- ▶ Indispensable G-Mark software support 1D, 2D, text, logo marking.
- ▶ Compatible for LFCII, and LFC D (desktop workstation)



Authorized Dealer



[www.GCCworld.com](http://www.GCCworld.com)

## StellarMark 3DS Series

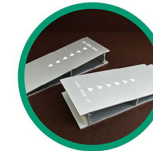
StellarMark 3DS series is integrated with a 3D scan head, which allows users to process round/cylinder objects with ease. The scan head provided with a 300x300 mm working area and the focus range is 100 mm. The system is an all-in-one designed (only for 20W/30W), allowing easier and fast integration into the production line to meet every customers' needs.



## Application



Sloped Objects



Sloped Objects



Object with Steps



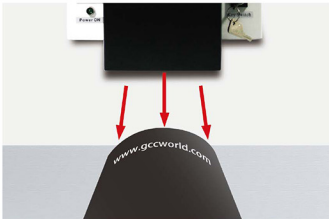
Tumbler



Product Label

### 3D Scan Head

A 3-axis scan head is included for the best marking solution for round/cylinder objects.



### Emergency Stop

A red button located on the front of the machine allows operators to stop the laser and AC power immediately for greater safety.



### Key Switch

The safety feature enables the manager/owner to keep the machine locked in a specific mode to avoid tampering.



### All-in-one Design

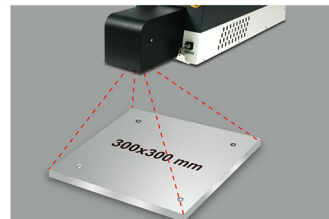
The machine has an advanced All-IN-ONE design featuring size and easy integration into the production line.



\*All-IN-ONE design is available only for 20W and 30W.

### 300x300 mm Working Area

Standard 300x300 mm working area that helps you process large objects and allow you for far more applications.



## Options



Rotary attachment



LFC II



LFC D